

Product Codes:

- 06529 - Aquarius Vanity Unit

Standard Equipment:

- Drawer storage
- Cupboard storage
- Open storage
- Stainless basin and lever tap

Optional Equipment:

- Glass splashback

Main Construction:

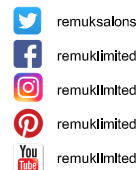
- MDF, with brushed nickel steel plated handles
- Stainless Steel basin and lever tap

Finish:

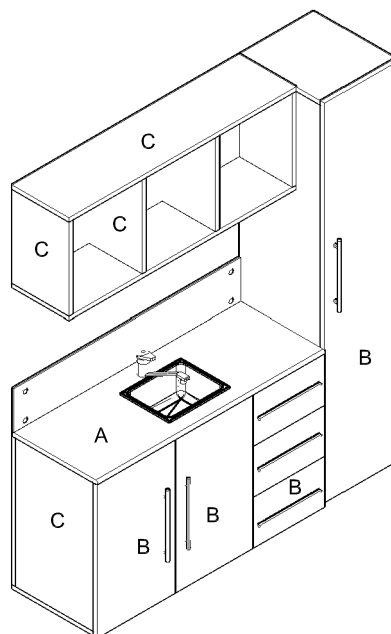
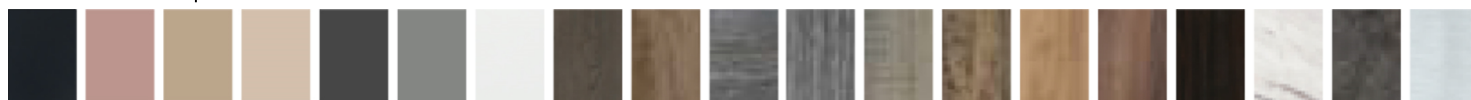
- Available in any standard high pressure laminate from the REM range
- Interior of central cupboard always finished in white

Features:

- Choice of REM colours for main body
- Stainless Steel basin
- Single Level Mixer Tap

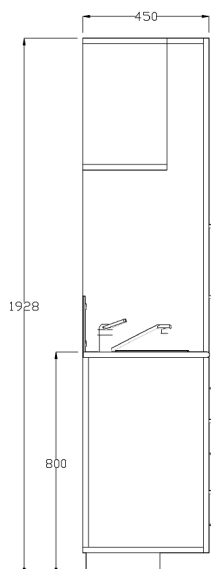
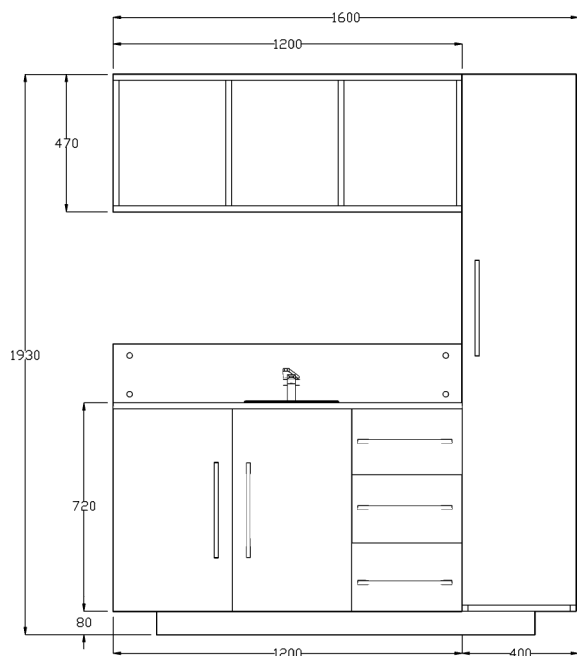
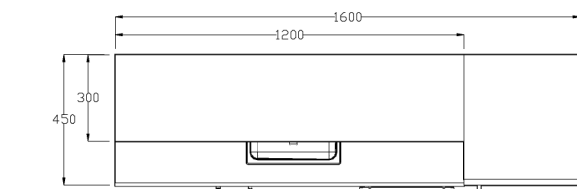


Laminate Finish Options:



A = Laminate
B = Laminate
C = Laminate

Optional extras must be clearly detailed at time of order.



SEALING REM UNITS:

1. MAKE SURE UNIT IS FIXED, LEVEL AND CLEAN.
2. APPLY ADEQUATE AMOUNT OF SILICONE SEAL TO TOP OF CARCASE.
3. FIX TOP OR SINK TO UNIT.
4. APPLY ADEQUATE AMOUNT OF SILICONE SEAL TO ALL AREAS WHERE WATER CAN INGRESS ON WORK SURFACE.
5. APPLY ADEQUATE AMOUNT OF SILICONE SEAL TO BASE AREA OF CARCASE WHERE WATER CAN INGRESS AT BASE OF UNITS.

ALL OUR UNITS SHOULD BE FITTED BY A PROFESSIONAL PERSON